

RADIAL LEADED POWER LINE CHOKES

YCAIRD 08 SERIES



FEATURES:

- High Saturation Material
- Polyolefin Shrink Tubing
- Low DC Resistance
- High Reliability Low cost

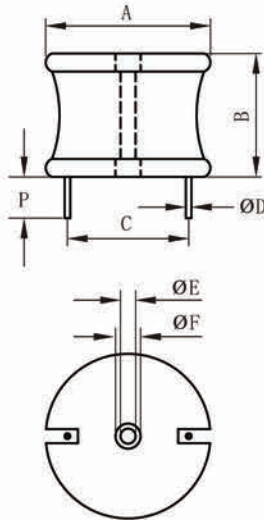
OPTIONS:

- Packaging: Tape & Reel is Standard (Qty: 1000 pcs)
Bulk packaging available for smaller quantities
- Tolerance: 10% is standard, tighter tolerances available.

COMMON APPLICATIONS:

- Switching Regulators
- RFI Suppression Filters
- Power Amplifiers
- Power Supplies
- SCR and Triac Controls
- Speaker Crossover Networks
- Automotive Systems
- Filters

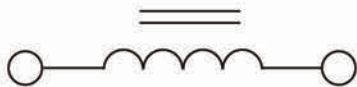
PHYSICAL CHARACTERISTICS



DIMENSIONS: inches/mm

A	B	P(min)	ØE	ØF
2.40/60.96	2.50/63.50	0.50/12.70	0.10/2.54	0.25/6.35

ELECTRONICAL SCHEMATIC



TECHNICAL INFORMATION:

The AIRD-05, 06, 07, 08, 04A, 06A, 08A Series of Power Line Choke is available in 367 standard values covering a wide range of inductance and current. The use of FAAIRD04A-821K high saturation flux density material make these coils ideal for use in switching regulated power supply applications and wherever high current choke values in FAAIRD04A-102K a small physical size are needed.

- Inductance Testing: HP4284A, HP4285A or equivalent
- RDC: QuadTech 1880 Milliohmmeter FAAIRD04A-122K
- Rated Current L value drop 10% typ. at IDC against its initial value
- Temperature rise 40°C Max Reference ambient temperature FAAIRD04A-152K
- Solderability: 75% of the lead wire shall be covered
- Soldering Methods: Wave, Reflow
- Operating Temperature: -25°C to +85°C
- Storage Temperature: -55°C to +125°C
- Terminal bending strength: 24.5N Min
- Moisture resistance: $\Delta L/L \leq \pm 10\%$

Note: All specifications subject to change without notice.

STANDARD SPECIFICATIONS

Part Number	L (μ H) @1KHz	DCR (Ω Max)	IDC (A Max)	Dim C (Inches/mm) Approx.	Dim ØD (Inches/mm) Nom.
YCAIRD08-5R6M	5.6	0.0012	55.0	*	0.225/5.7150
YCAIRD08-6R8M	6.8	0.0013	55.0	*	0.225/5.7150
YCAIRD08-8R2M	8.2	0.0015	55.0	*	0.225/5.7150
YCAIRD08-100K	10.0	0.0017	55.0	*	0.225/5.7150
YCAIRD08-120K	12.0	0.0020	55.0	*	0.225/5.7150
YCAIRD08-150K	15.0	0.0021	55.0	*	0.225/5.7150
YCAIRD08-180K	18.0	0.0023	55.0	*	0.225/5.7150
YCAIRD08-220K	22.0	0.0025	55.0	*	0.225/5.7150
YCAIRD08-270K	27.0	0.0026	55.0	*	0.225/5.7150
YCAIRD08-330K	33.0	0.0029	55.0	*	0.225/5.7150
YCAIRD08-390K	39.0	0.0033	55.0	*	0.225/5.7150
YCAIRD08-470K	47.0	0.0035	55.0	*	0.225/5.7150
YCAIRD08-560K	56.0	0.0039	55.0	*	0.225/5.7150
YCAIRD08-680K	68.0	0.0043	50.0	*	0.225/5.7150
YCAIRD08-820K	82.0	0.0048	45.0	*	0.210/5.3340
YCAIRD08-101K	100.0	0.0052	40.0	*	0.210/5.3340
YCAIRD08-121K	120.0	0.0071	39.0	*	0.210/5.3340
YCAIRD08-151K	150.0	0.0079	38.0	*	0.210/5.3340
YCAIRD08-181K	180.0	0.0087	37.0	*	0.210/5.3340
YCAIRD08-221K	220.0	0.0120	33.0	*	0.190/4.8260
YCAIRD08-271K	270.0	0.0140	30.0	*	0.190/4.8260
YCAIRD08-331K	330.0	0.0180	27.0	1.80/45.72	0.120/3.0480
YCAIRD08-390K	390.0	0.0200	25.0	1.70/43.18	0.120/3.0480
YCAIRD08-471K	470.0	0.0280	21.0	1.70/43.18	0.105/2.6670
YCAIRD08-561K	560.0	0.0310	20.0	1.45/44.45	0.105/2.6670
YCAIRD08-681K	680.0	0.034	19.0	1.80/45.72	0.105/2.667
YCAIRD08-820K	820.0	0.047	16.0	1.80/45.72	0.049/2.3876
YCAIRD08-102K	1000.0	0.052	15.5	1.75/44.45	0.049/2.3876
YCAIRD08-122K	1200.0	0.057	15	1.78/45.212	0.049/2.3876
YCAIRD08-152K	1500.0	0.080	13.0	1.80/45.72	0.084/2.1336
YCAIRD08-182K	1800.0	0.088	12.0	1.70/43.18	0.084/2.1336
YCAIRD08-222K	2200.0	0.122	10.0	1.70/43.18	0.075/1.905
YCAIRD08-272K	2700.0	0.135	10.0	1.75/44.45	0.075/1.905
YCAIRD08-332K	3300.0	0.188	8.0	1.80/45.72	0.068/1.7272
YCAIRD08-392K	3900.0	0.205	8.0	1.75/44.45	0.068/1.7272
YCAIRD08-472K	4700.0	0.283	6.7	1.78/45.212	0.060/1.5240
YCAIRD08-562K	5600.0	0.309	6.4	1.80/45.72	0.060/1.5240
YCAIRD08-682K	6800.0	0.431	5.4	1.70/43.18	0.054/1.3716
YCAIRD08-822K	8200.0	0.472	5.2	1.75/44.45	0.054/1.3716
YCAIRD08-103K	10000.0	0.521	5.0	1.80/45.72	0.054/1.3716
YCAIRD08-123K	12000.0	0.717	4.2	1.80/45.72	0.048/1.2192
YCAIRD08-153K	15000.0	0.803	4.0	1.75/44.45	0.048/1.2192
YCAIRD08-183K	18000.0	1.111	3.4	1.78/45.212	0.043/1.0922
YCAIRD08-223K	22000.0	1.228	3.2	1.80/45.72	0.043/1.0922
YCAIRD08-273K	27000.0	1.716	2.7	1.75/44.45	0.039/0.9906
YCAIRD08-333K	33000.0	1.896	2.6	1.80/45.72	0.039/0.9906
YCAIRD08-393K	39000.0	2.590	2.3	1.75/44.45	0.035/0.8890
YCAIRD08-473K	47000.0	2.840	2.2	1.78/45.212	0.035/0.8890
YCAIRD08-563K	56000.0	3.104	2.1	1.80/45.72	0.035/0.8890
YCAIRD08-683K	68000.0	4.331	1.7	1.85/46.99	0.031/0.7874
YCAIRD08-823K	82000.0	4.756	1.6	1.90/48.26	0.031/0.7874
YCAIRD08-104K	100000.0	6.652	1.4	1.95/49.53	0.028/0.7112

* Inductors wound with 2 standards of wire. Consult Engineering for dimension. K=±10%, M=±20%